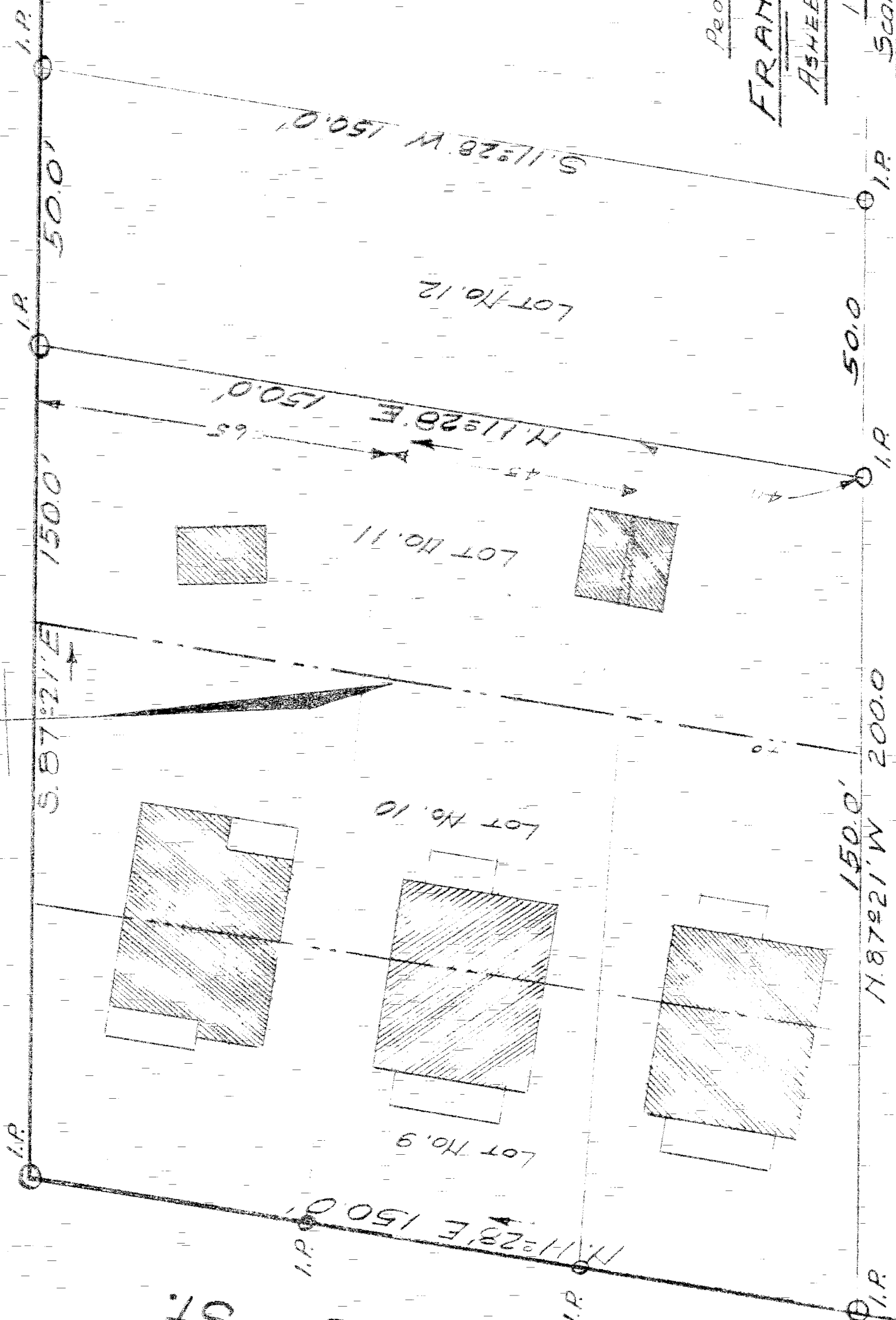


WAINMAN AVE.

UMHARIE ST.



PROPERTY OF  
FRANK AUMIAN  
ASHEBORO, N.C.  
 1935  
 Scale 1" = 20'

Note: The above is a part of "HOLLYWOOD SUBDIVISION"  
 See Book of Plats No. 1 - Page No. 9

R.D. Trogdon - Engineer